

PRODUCT LINE

Pork



HARVEST SHERWOOD
FOOD DISTRIBUTORS



A GUIDE TO PORK CUTS

Pork is not graded by the USDA as is beef. Pork grading involves two basic factors. Size and gender of the animal. Some of the terms that are used are:

Butcher Hog - Male or female raised strictly for meat. Weighs 195 to 320 pounds.

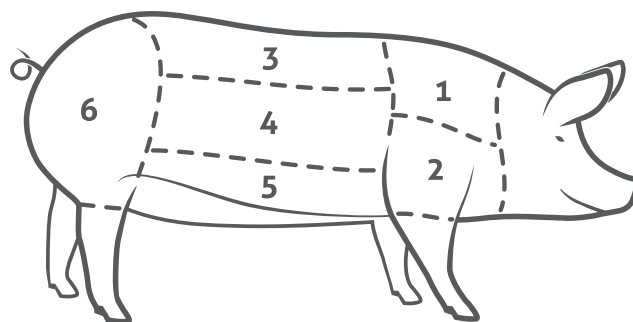
Barrow - Male butcher hog.

Gilt - Female butcher hog.

Sow - Female breeding hog. Weighs 300 to 700 pounds.

Primal Cuts

Blade	Pork Shoulder Roast	Pork Shoulder Butt
Boston-Style Shoulder	Boston Butt Boston Butt Steak	Ground Pork
Arm Picnic Shoulder	Shoulder Roast Smoked Hocks	Hocks Cushion Meat
Loin	Loin Rib Roast Pork Tenderloin Center Cut Loin Chops	End Cut Chops Pork Loin Back Ribs Country-Style Ribs
Side	Spareribs Bacon Pork Belly	Rib-in Belly Pork Spareribs St. Louis-Style Back Ribs
Leg	Smoked Ham Fresh Leg Pork Leg (Fresh Ham)	Pork Leg (Fresh Ham) Boneless Smoked Ham Shanks Pork Cubed Steak



1 - Boston Butt

2 - Picnic

3 - Loin

4 - Ribs

5 - Belly

6 - Leg/Ham



RIBS

Pork ribs are delicious and come in three popular varieties—Back Ribs, Spare Ribs and Country-Style Ribs. Back Ribs, commonly called Baby Back Ribs come from the loin where the ribs meet the back. Baby Back Ribs are so named because they’re smaller than Spare Ribs. Spare Ribs come from the belly of the hog along the breastbone. This variety has the least amount of meat per bone, but has excellent flavor. Country-Style ribs come from the rib end of the loin, and are the meatiest of all. At Harvest Sherwood we take pride in supplying a wide variety of pork cuts to delight our customer.

Ribs



Cuts

- Sparerib
- St. Louis Rib
- Back Ribs
- Brisket Bone
- Riblets 10 lb



Ask your Sales Account Manager for details.



Hams



Cuts

Hams Bone In

Roll Out Hams

Bellies



Cuts

Bone in & Boneless

Skin On and Skinless



Offal's

Cuts

Feet

Tails

Stomach

Ears

Neckbones

Livers



Ask your Sales Account Manager for details.



Smoked

Cuts

Smoked Picnics

Smoked Center Cut Loins

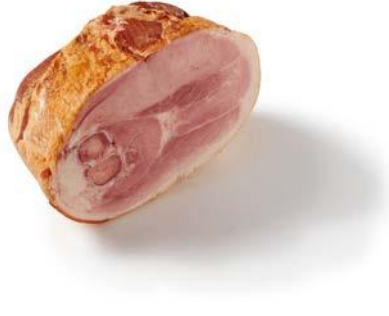
Smoked Ham

Smoked Chops

Smoked Ham Shank Portions

Smoked Ham Butt Portions

Smoked Ham Steaks

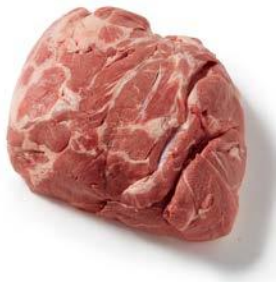


Butts

Cuts

Bone-in Butts

Boneless Butts



Picnic & Shoulder

Cuts

Picnic

Cushion

Whole Shoulder



Ask your Sales Account Manager for details.



Loins



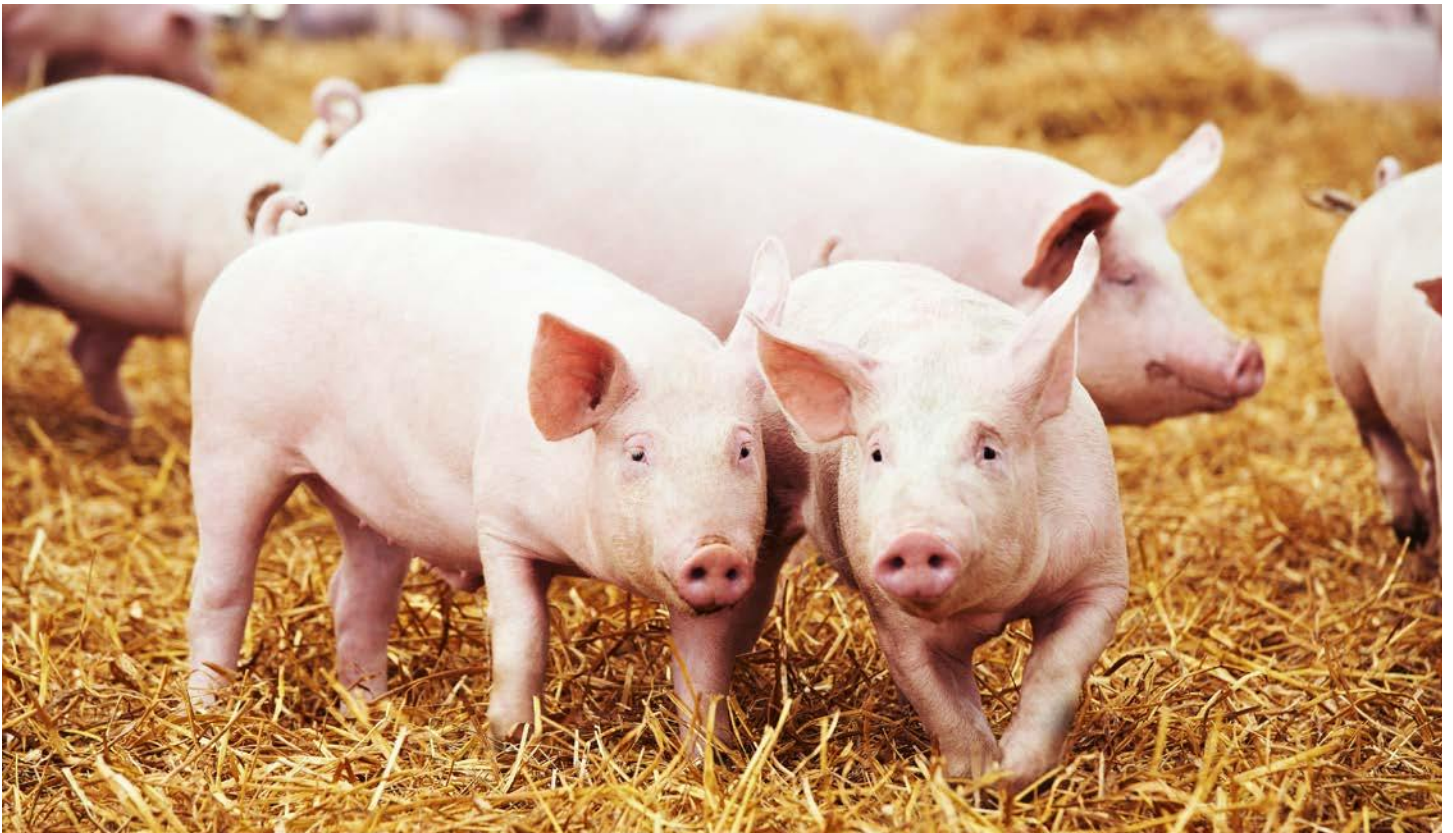
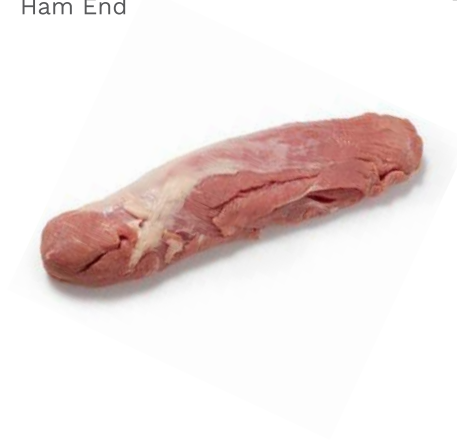
Cuts

Loin Bone In & Boneless

Ham End

Rib End

Tenderloin



Ask your Sales Account Manager for details.





BRANCHES

East Division

Atlanta GA
404-348-0001

Cleveland OH
216-662-8000

Detroit MI
313-659-7300

Miami FL
305-687-0000

Orlando FL
407-296-0818

West Division

Western Box OR (Portland)
503-284-3314
800-547-9801

San Francisco CA (Newark)
510-790-1915
866-318-6328

San Diego CA
619-477-0185
800-653-2333

Los Angeles CA
323-587-2383
800-372-6581

Phoenix AZ
623-936-0020
800-883-6328

Salt Lake City UT
801-972-4114

Denver CO
720-857-2380
800-306-6328

Kansas City KS
913-371-2333
800-653-6328

Hamilton Meats | Chula Vista CA
619-591-2960 | Toll free 866-796-3287

WWW.HARVESTSHERWOOD.COM